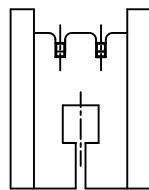
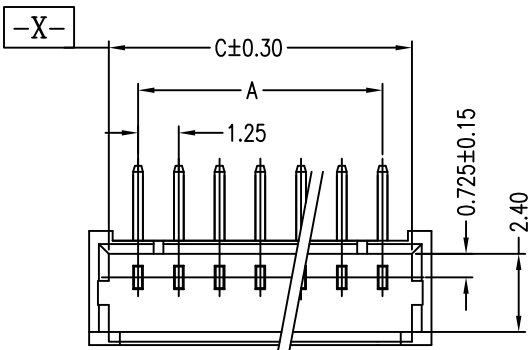


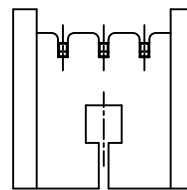
Tous droits strictement réservés. Reproduction ou communication à des tiers interdite sous quelque forme que ce soit sans autorisation écrite du propriétaire. Propriété de c FCI. Droits de reproduction FCI.



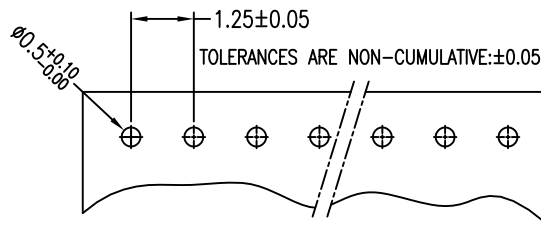
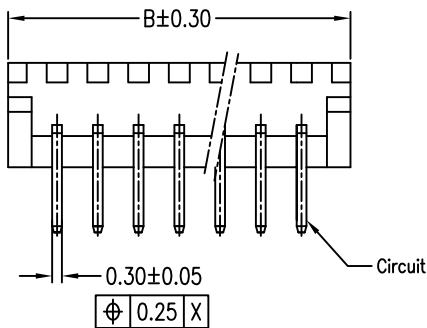
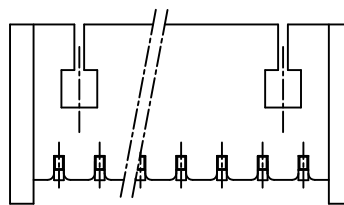
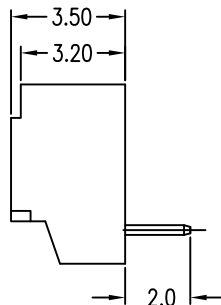
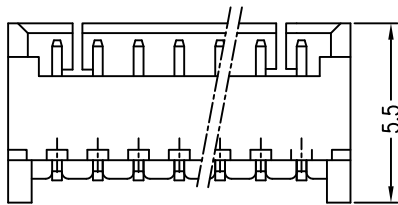
All rights strictly reserved. Reproduction or issue to third parties in any form whatever is not permitted without written authority from the proprietor. Property of FCI. Copyright FCI.



2 POS



3 POS



P.C. BOARD LAYOUT
(PCB THK=0.8)

NOTES:

1. SPECIFICATIONS

Current Rating: 1A AC,DC
Voltage Rating: 125V AC,DC
Temperature Range: -40°C ~ +105°C
Contact Resistance: 20mΩ Max.
Insulation Resistance: 100MΩ Min.
Withstanding Voltage: 500V AC/minute

2. Material & finish:

Housing: Natural Thermoplastic, UL94V-0
Contact and metal hold-down: Phosphor Bronze
Plating of contact: Matte Tin or gold plating over Nickel

3. Ordering Information & Dimensions:

10114831- X X X XX LF

Material

1: LCP

Plating

0: Matte Tin

1: Gold Flash

LF: See note A

pin counts from 02-15

Packaging

1: Tape & Reel

Part No.	Dimensions			
	POS	A	B	C
10114831-xxx02LF	2	1.25±0.10	4.25	3.05
10114831-xxx03LF	3	2.50±0.10	5.50	4.30
10114831-xxx04LF	4	3.75±0.10	6.75	5.55
10114831-xxx05LF	5	5.00±0.10	8.00	6.80
10114831-xxx06LF	6	6.25±0.15	9.25	8.05
10114831-xxx07LF	7	7.50±0.15	10.50	9.30
10114831-xxx08LF	8	8.75±0.15	11.75	10.55
10114831-xxx09LF	9	10.00±0.15	13.00	11.80
10114831-xxx10LF	10	11.25±0.20	14.25	13.05
10114831-xxx11LF	11	12.50±0.20	15.50	14.30
10114831-xxx12LF	12	13.75±0.20	16.75	15.55
10114831-xxx13LF	13	15.00±0.20	18.00	16.80
10114831-xxx14LF	14	16.25±0.20	19.25	18.05
10114831-xxx15LF	15	17.50±0.20	20.50	19.30

Note A: The LF means RoHS compliance, the housing will withstand exposure to peak temperature 260 degree C for 5 sec in the IR re-flow process.

mat'l. code				tolerances unless otherwise specified			CUSTOMER COPY		FCI		www.fciconnect.com					
ltr	ecn no	dr	date	linear	.X ± 0.25		projection	title								
A	T10-0145	J H	12/1/10		.XX ± 0.15											
					.XXX ±											
				angles	0° ±2'		MM	WTB 1.25MM WAFER 90° DIP								
				dr	JASON HSU	12/1/10						scale	product family		PCIE	code
				enr	JASON HSU	12/1/10							size	dwg no		TWN
				chr	GARY HSIEH	12/1/10	1:1	A4		10114831	sheet					
				appd	JOSEPH HSIA	12/1/10					1 of 1					
sheet index	revision sheet	A	1													